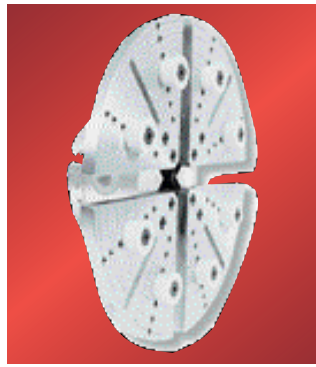
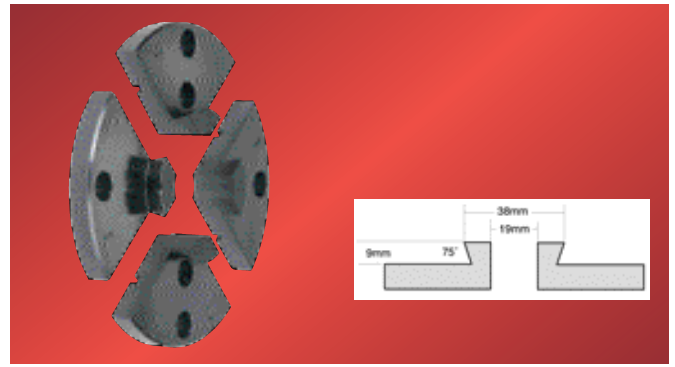




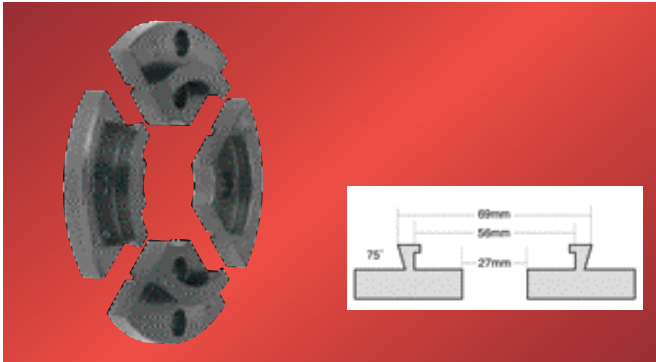
**Stock-no. 10000600**  
Lathe chuck M33 x 3.5  
Ø 100 mm standard with  
type C jaws



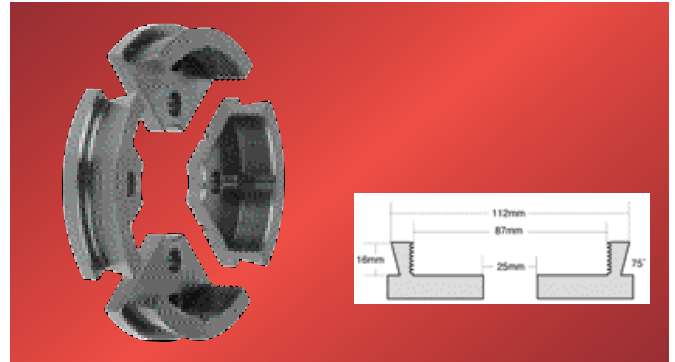
**Stock-no. 10000604**  
Type B jaws  
Disc jaws Ø 250 mm with  
8 rubber clamping cones



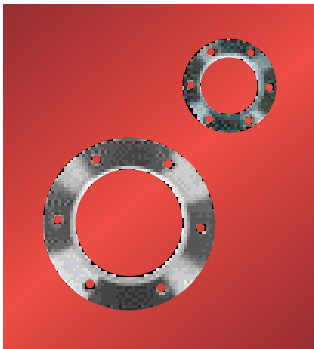
**Stock-no. 10000601**  
Type F jaws



**Stock-no. 10000602**  
Type C jaws (standard)



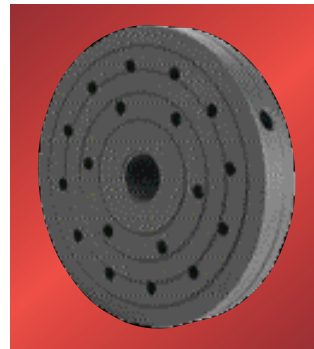
**Stock-no. 10000603**  
Type G jaws



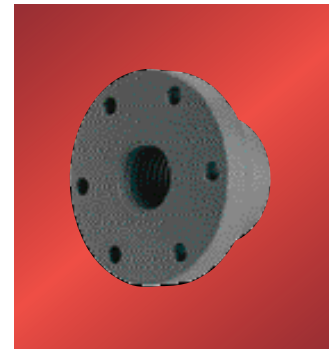
**Stock-no. 10000605**  
Clamping disc ring Ø 100 mm  
matching type C jaws



**Stock-no. 10000607**  
Screw insert matching lathe  
chuck with type C jaws



**Stock-no. 709921**  
Face plate 152 mm  
support M 33 x 3.5 mm

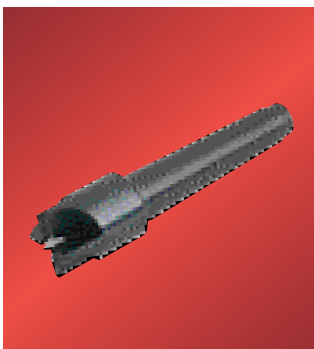


**Stock-no. 708334**  
Face plate 76 mm  
support 1" x 8 TPI

**Stock-no. 10000606**  
Clamping disc ring Ø 55 mm  
matching type F jaws

**Stock-no. 708333**  
Face plate 152 mm  
support 1" x 8 TPI

**Stock-no. 709911**  
Face plate 76 mm  
support M 33 x 3.5 mm



**Stock-no. 708330**  
Four-toothed live center MT-2



**Stock-no. 10000610**  
Mini lathe chuck 1" x 8 TPI,  
Ø 65 mm, with 3 jaw sets and  
screw insert



**Stock-no. 10000611**  
Lathe chuck M33x3,5,  
Ø 95 mm, with 3 jaw sets and  
screw insert



**Stock-no. 10000612**  
Lathe chuck M33x3,5,  
Ø 115 mm, with 3 jaw sets and  
screw insert

# WOOD TURNING ACCESSORIES LATHES



**Stock-no. 10000450**  
Adapter 1" x 8TPI / M33x3,5



**Stock-no. 709960**  
Adapter M33x3,5 / 1" x 8TPI



**Stock-no. 708331**  
Live center MT-2  
**Stock-no. 708337**  
Fixed center point MT-2



**Stock-no. 709933**  
Live center MT-2



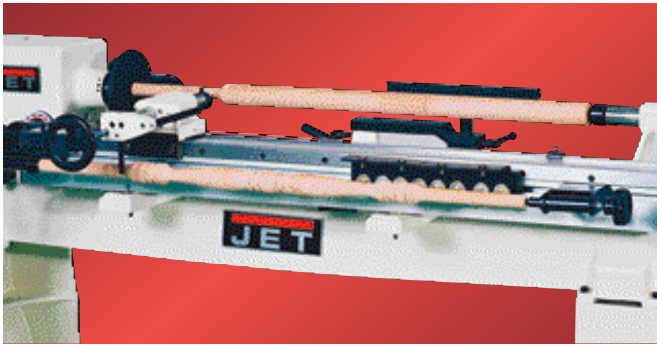
**Stock-no. 709008**  
High-speed tool set (set with 8 pcs.)



**Stock-no. 709160**  
High-speed tool set (set with 3 pcs.)



**Stock-no. 708342 K**  
Drill chuck 10 mm with tapered mandrel MT-2  
**Stock-no. 708343 K**  
Drill chuck 13 mm, with tapered mandrel MT-2



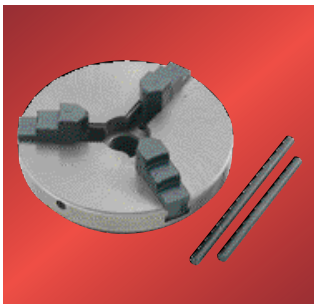
**Stock-no. CTP-901120**  
Copying attachment 1000 mm for JWL-1442 / JWL-1642 (3520B/4224)



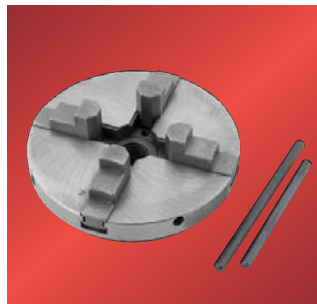
**Stock-no. 10003370**  
Set of copy tools



**Stock-no. 6294732**  
Floor-mounted tool rest heavy-duty cast iron design



**Stock-no. 708338**  
3-jaw scroll chuck 150 mm



**Stock-no. 708339**  
4-jaw chuck 150 mm



**Stock-no. 708340**  
4-jaw independent chuck 150 mm



**Stock-no. 708332**  
Face shield