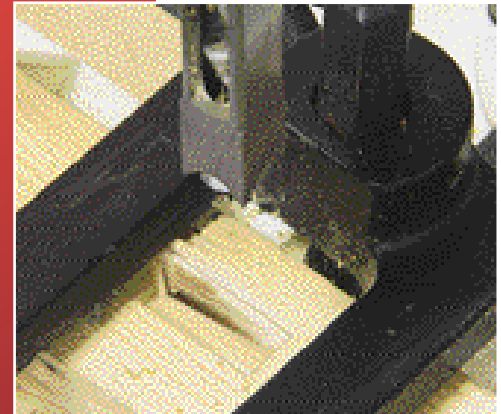


## JBM-5



Adapter for chisel in different standard shank diameters (5/8", 3/4", 13/16")



Quick and easy mortising of all wood panels and door locks

## JBM-5 – BENCHTOP MORTICER

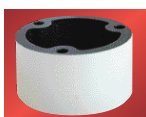
- ◆ Powerful motor suitable for continuous operation
- ◆ Heavy duty cast iron and steel construction for durability and stability
- ◆ Three jaw drill chuck with extended chuck key for ease of positive grip on mortise drill bit
- ◆ Effective rack and pinion head raising and lowering with gas cylinder
- ◆ Quick and easy mortising and deep-hole drilling on all wood panels and door locks
- ◆ Adjustable depth control stop
- ◆ Reversible column for mortising larger workpiece

### Standard equipment

- ◆ 10 mm drill chuck
- ◆ Extended key chuck
- ◆ Work hold-down
- ◆ MDF table surface

Stock number 230V	708580M
<b>Model</b>	JBM-5
<b>Speed</b>	1450 rpm
<b>Max. chisel capacity</b>	12 mm
<b>Drill chuck capacity</b>	10 mm
<b>Base size</b>	190 x 310 mm
<b>Fence size</b>	40 x 320 mm
<b>Head stroke</b>	120 mm
<b>Max. workpiece height</b>	105 mm
<b>Chisel center to fence, max.</b>	90 mm
<b>Motor power output</b>	0.5 HP / S <sub>i</sub> 100%
<b>Motor power input</b>	0.9 HP / S <sub>e</sub> 40%
<b>Weight</b>	20 kg

### Accessories



- ◆ 708579 50 mm riser block



- ◆ 708597 Closed stand with mobile base and tool basket