



CE

### RM-22N BENCH ROTARY MACHINE

- ◆ Long throat makes unit highly versatile
- ◆ Performs burring, edging, elbowing, flanging, flattening and turning
- ◆ Adjustable roll pressure by means of top mounted hand crank
- ◆ Can be used in both forward and reverse
- ◆ Operation is smooth fast and precise
- ◆ Table mount with clamp is standard
- ◆ Six interchangeable rolls with  $\varnothing$  21.4 mm

<b>Stock number</b>	<b>754022</b>
<b>Model</b>	<b>RM-22N</b>
<b>Max. sheet capacity</b>	
<b>Stainless steel</b>	0.45 mm
<b>Steel St 37, C15</b>	0.5 mm
<b>Mild-steel, copper, brass</b>	0.75 mm
<b>Mild-copper, aluminium alloy</b>	0.9 mm
<b>Mild-aluminum, Zinc</b>	1.3 mm
<b>Plycarbonate PC</b>	1.6 mm
<b>ABS</b>	2.3 mm
<b>Distance between shaft centers</b>	50 mm
<b>Depth of throat to frame</b>	178 mm
<b>Dimensions (LxWxH)</b>	460 x 200 x 405 mm
<b>Weight</b>	29 kg



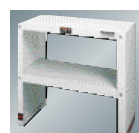
CE

### HN-16N HAND NOTCHER

- ◆ Made of cast iron
- ◆ Capable of notching virtually any shearable material
- ◆ Can notch angles of more than 90° through a two step process
- ◆ Easy-to-read front gauges
- ◆ Heavy-duty cutting blade

<b>Stock number</b>	<b>754016</b>
<b>Model</b>	<b>HN-16N</b>
<b>Max. sheet capacity</b>	
<b>Stainless steel</b>	0.9 mm
<b>Steel St 37, C15</b>	1.0 mm
<b>Mild-steel, copper, brass</b>	1.6 mm
<b>Mild-copper, aluminium alloy</b>	1.8 mm
<b>Mild-aluminum, Zinc</b>	2.5 mm
<b>Plycarbonate PC</b>	3 mm
<b>ABS</b>	5 mm
<b>Max. notch</b>	175 mm
<b>Stroke</b>	19 mm
<b>Dimensions (LxWxH)</b>	610 x 530 x 660 mm
<b>Weight</b>	29 kg

#### Accessories



- ◆ 754017 Stand