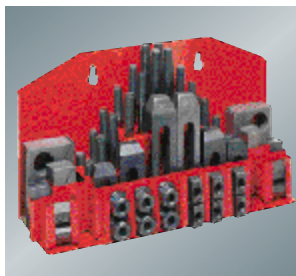




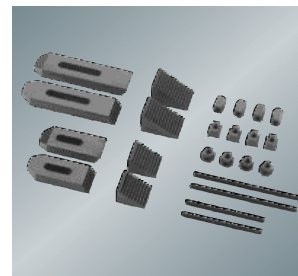
Stock no. 50000105
ISO30-ER-32 collet holder
(JMD-45PF, JVM-836VS, JTM-4VS)
Stock no. 50000125
ISO40-ER-32
11 pcs/set collet holder
(JMD-1050VS)



Stock no. 50000059
42 pieces clamping kit for 12 mm
T-groves (JMD-3)
Stock no. 50000165
Assortment of clamping tools
for 14 mm T-slots (JMD-15)
Stock no. 50000170
Assortment of clamping tools
for 16 mm T-slots



Stock no. 50000180
MT-3 Collet chuck with ER 40
collets 6, 8, 10, 12, 16, 20, 25 mm
(JMD-3, JMD-15, JMD-18)
Stock no. 50000027
MT-2 collet set Dia
3, 4, 5, 6, 8, 10 mm
(JMD-1, JMD-2)



Stock no. 50000028
Assortment of clamping tools
8 mm T-slots (JMD-1, JMD-2)
Stock no. 50000049
Assortment of clamping tools
12 mm T-slots
(JMD-3)



Stock no. 50000103
ISO30-MT-3 morse taper adapter
(JMD-45PF, JVM-836VS,
JTM-4VS)
Stock no. 50000123
ISO40-MT-3 morse taper adapter
(JTM-1050VS)



Stock no. 50000102
ISO30 MT-2 morse taper adapter
(JMD-45PF, JVM-836VS,
JTM-4VS)
Stock no. 50000122
ISO40-MT-2 morse taper adapter
(JTM-1050VS)



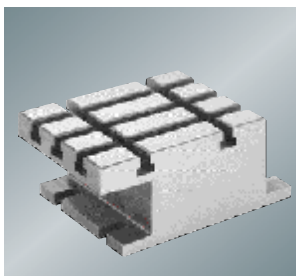
Stock no. 50000106
ISO30-22 mm shell
end mill arbor (JMD-45PF,
JVM-836VS, JTM-4VS)
Stock no. 50000126
ISO40-22 mm shell
end mill arbor
(JTM-1050VS)



Stock no. 50000104
ISO30-B-16 taper shaft
for drill chucks (JMD-45PF,
JVM-836VS, JTM-4VS)
Stock no. 50000124
ISO40-B-16 taper shaft
for drill chucks
(JTM-1050VS)



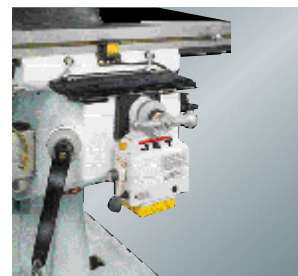
Stock no. 350055
Coolant system 230V
(JMD-15, JMD-18, JMD-45PF)



Stock no. 50000057
Riser table for horizontal milling
(JMD-3)



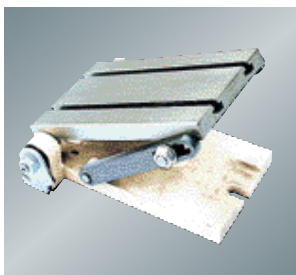
Stock no. 50000390
X-axis power feed
(JMD-15, JMD-18, JMD-18VS,
JMD-45PF)



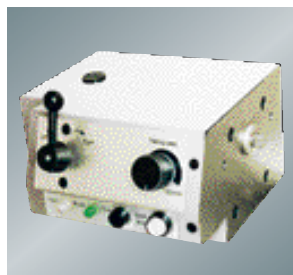
Stock no. 50000101
Y-axis feed
(JVM-836VS, JTM-4VS)
Stock no. 50000108
Y-axis feed for JTM-1050VS



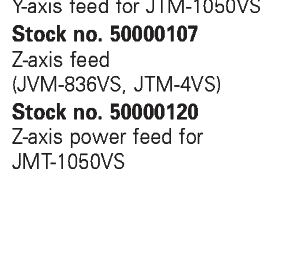
Stock no. 50000109
Power draw bar ISO40, M16
for JTM-1050VS



Stock no. 50000063
Angle work table, tiltable
(JMD-3)



Stock no. 50000055
X-axis power feed
(JMD-3)



Stock no. 50000107
Z-axis feed
(JVM-836VS, JTM-4VS)
Stock no. 50000120
Z-axis power feed for
JMT-1050VS

Stock no. 50000115
Power draw bar ISO30, M12
(JVM-836VS, JTM-4VS)

MILLING / DRILLING

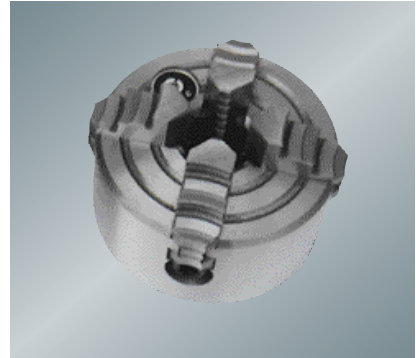
ACCESSORIES MILLING / DRILLING CENTER



Stock no. 50000056
Closed machine stand
(JMD-3)



Stock no. 350045
Closed machine stand
(JMD-15, JMD-18, JMD-18VS,
JMD-45PF)

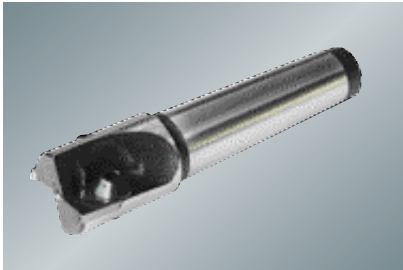


Stock no. 50000034
4-jaw chuck Ø 80 mm for 50000026

Stock no. 50000032
Chuck flange for 50000026

Stock no. 50000915
4-jaw chuck Ø 100 mm for 50000065

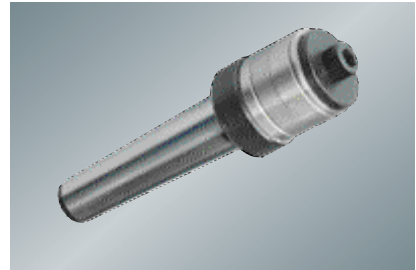
Stock no. 50000068
Chuck flange for 50000065



Stock no. 50000062
Indexable carbide endmill Ø 30 mm / MT-3
(JMD-3, JMD-15, JMD-18)



Stock no. 50000035
Boring bar MT-2
(JMD-1, JMD-2)

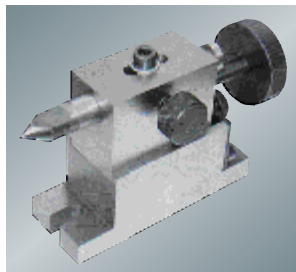


Stock no. 50000038
Shell end mill arbor MT-2 / Ø 13 mm
(JMD-1, JMD-2)



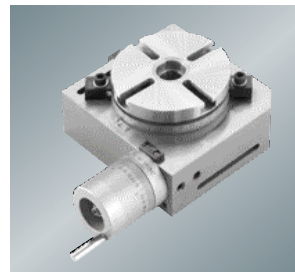
Stock no. 50000029
Dividing kit for 50000026

Stock no. 50000066
Dividing kit for 50000065



Stock no. 50000031
Tailstock for 50000026
(JMD-1, JMD-2)

Stock no. 50000067
Tailstock for 50000065
(JMD-3)



Stock no. 50000026
Rotary table Ø100 mm
(JMD-1, JMD-2)

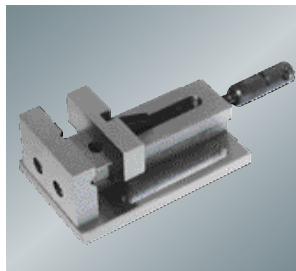
Stock no. 50000065
rotary table Ø 150 mm
(JMD-3, JMD-15)



Stock no. 464816
Divider with round circular
dividing table 200 mm / MT-3



Stock no. 50000064
100 mm angle vise
schwenkbar
(JMD-3)



Stock no. 50000025
Machine vise 50 x 50 mm
Stock no. 10000371
Machine vise 100 x 100 mm



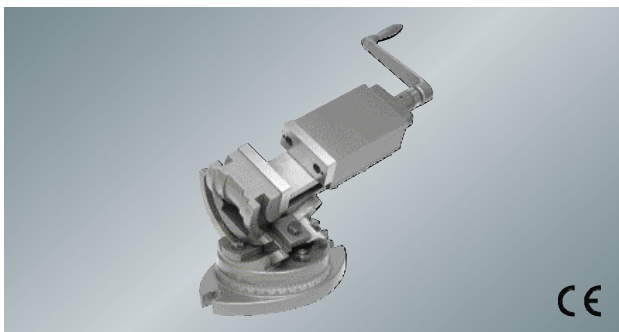
Stock no. 50000036
55 x 75 mm quick vise with
rotary table
(JMD-1, JMD-2)
Stock no. 50000058
80 x 100 mm quick vise with
rotary base
(JMD-3)



Stock no. 385019
Tiltable vise 100 x 30 x 0-100 mm
Stock no. 385020
Tiltable vise 125 x 32 x 0-105 mm
Stock no. 385021
Tiltable vise, 150 x 40 x 0-140 mm

SUPER PRECISION MACHINE VISES

MACHINE VISES

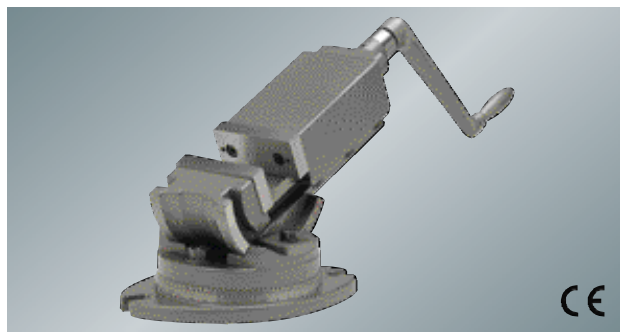


CE

SUPER PRECISION 3-AXIS TILTING MACHINE VISES

- ◆ Perfect vise for 3-axis jobs
- ◆ Vise bodies are constructed of close grained, high tensile, seasoned alloy castings
- ◆ Durable polychromatic finish
- ◆ Jaw plates hardened and ground 55 +3 HRC
- ◆ No jaw tilt
- ◆ Accurately indexed for 3 way angular work
- ◆ All ground surfaces are made to close accuracies
- ◆ 45° Tilting range on either side
- ◆ 90° Vertical indexing
- ◆ 360° Swivel base

Stock number	11701	11702	11803
Chuck jaw	75 x 33 mm	100 x 38 mm	125 x 45 mm
Jaw opening	75 mm	100 mm	125 mm
Weight	11 kg	21 kg	37 kg

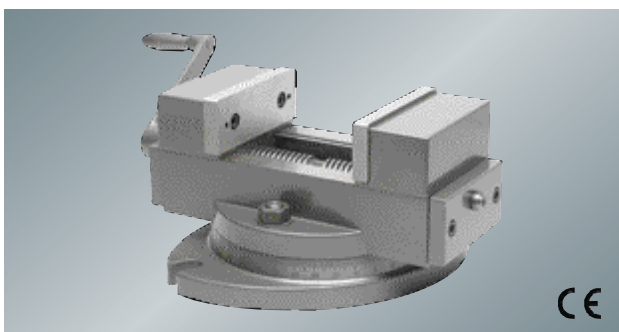


CE

SUPER PRECISION 2-AXIS TILTING MACHINE VISES

- ◆ Perfect vise for 2-axis
- ◆ Vise bodies are constructed of close grained, high tensile, seasoned alloy castings
- ◆ All ground surfaces made to close tolerances
- ◆ Jaw plates hardened and ground 55 +3 HRC
- ◆ No jaw tilt
- ◆ Ergonomically designed all steel handle with spring loaded ball attachment
- ◆ Perfectly indexed for angular work
- ◆ 90° Tilting range
- ◆ 360° Swivel base

Stock number	11703	11704	11705
Chuck jaw	50 x 24 mm	75 x 33 mm	100 x 38 mm
Jaw opening	50 mm	75 mm	100 mm
Weight	3.6 kg	9.5 kg	17 kg

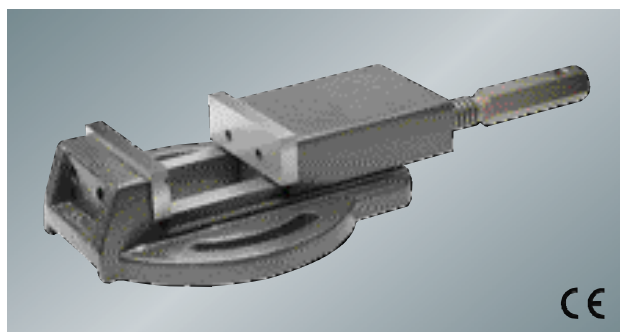


CE

SUPER PRECISION SELF CENTERING VISE

- ◆ Allows for accurate centering of jobs automatically
- ◆ Vise bodies are constructed of close grained castings
- ◆ High tensile, seasoned alloy castings
- ◆ Jaws ground and hardened to 55 + 3 HRC
- ◆ Automatically adjusts work piece to its center
- ◆ Ergonomically designed all steel handle with spring loaded ball attachment
- ◆ Swivel base provided with positive locking and adjustable through 360°

Stock number	11713
Chuck jaw	100 x 38 mm
Jaw opening	100 mm
Weight	14.5 kg



CE

SUPER PRECISION DRILL PRESS VISES

- ◆ Rugged design makes these vises perfect for even the most difficult of drilling, tapping and reaming operations
- ◆ Body made from close grain aged cast iron
- ◆ Hardness of jaws-55+3HRC
- ◆ Ground vise bed for smooth and consistent jaw movement
- ◆ Jaws are hardened and ground, with cross patterned 90° V-grooves in the stationary jaw facilitating holding of round pieces both horizontally & vertically

Stock number	11719
Chuck jaw	100 x 33 mm
Jaw opening	100 mm
Weight	9 kg