



252205

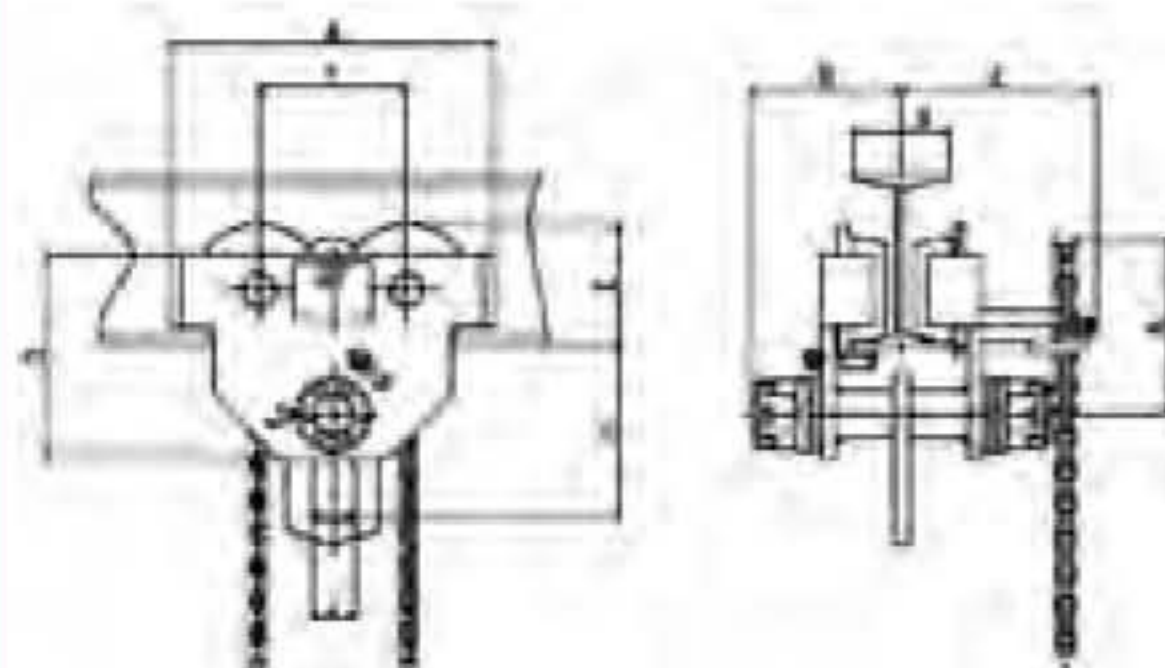


GT SERIES INDUSTRIAL-DUTY GEARED TROLLEYS

- Hand chain gear system provides precision load spotting through a wide range of beams
- For use with wide-flange H-beams, standard I-beams, or curved track
- 10' hand chain drop standard except for 1/2 GT, custom length lifts available
- Rugged steel side plates feature built-in bumper
- Hardened wheels with lubricated for life, double sealed ball bearings
- Compliance: OSHA, ANSI/ASME B30.11 and B30.17 standards guards

CAUTION

Read owners manual for additional warnings and precautions before use. Failure to read, understand and follow all instructions can result in serious injury. Do not exceed rated capacity. Use clamp only if authorized and properly trained. Do not move unbalanced load. Not for use in explosive environment.



DIMENSIONS (IN.)

MODEL	A	B	C	D	E	F	G	H	I	J	K
1/2 GT	8-3/8	5-3/16	7-15/16	5-1/8	2-5/16	4	3-6	4	1-9/16	15/16	5-3/16
1 GT	9-15/16	6-1/2	9	6-1/8	2-15/16	4-5/8	3-1/4 - 8	4-1/2	1-15/16	1-3/16	5-3/16
2 GT	11-7/8	6-7/8	9	6-11/16	3-9/16	5-3/8	3-1/2 - 8	5-1/4	2-9/16	1-7/16	5-3/16
3 GT	13-5/8	7-5/16	9-15/16	8-9/16	4-5/16	6-3/16	5-8	6-5/8	3	1-3/4	7-1/4
5 GT	15-1/16	7-7/8	10-1/16	10-1/16	4-13/16	6-3/4	5-8	7-7/8	3-13/16	2-3/8	7-1/4

STOCK NO.	MODEL	CAPY (TON)	CHAIN LENGTH (FT)	BEAM FLANGE WIDTH (IN.)	BEAM HEIGHT (IN.)	REQ. HAND CHAIN (FT.) TO LOAD 1'	MIN. RADIUS CURVE LIFT (IN.)	SHIP WEIGHT (LBS.)	CARTON PACK
252205	1/2 GT	1/2	8	3-6	4-19	7	39	32	1
252210	1 GT	1	10	3-1/4-8	4-19	9	39	46	1
205220	2 GT	2	10	3-1/2-8	4-19	10	43	64	1
252230	3 GT	3	10	5-8	5-19	11	51	108	1
252250	5 GT	5	10	5-8	5-19	12	55	147	1
252260	10 GT	10	10	6-8	5-19	15	67	230	1