

ET SERIES ELECTRONIC TROLLEYS

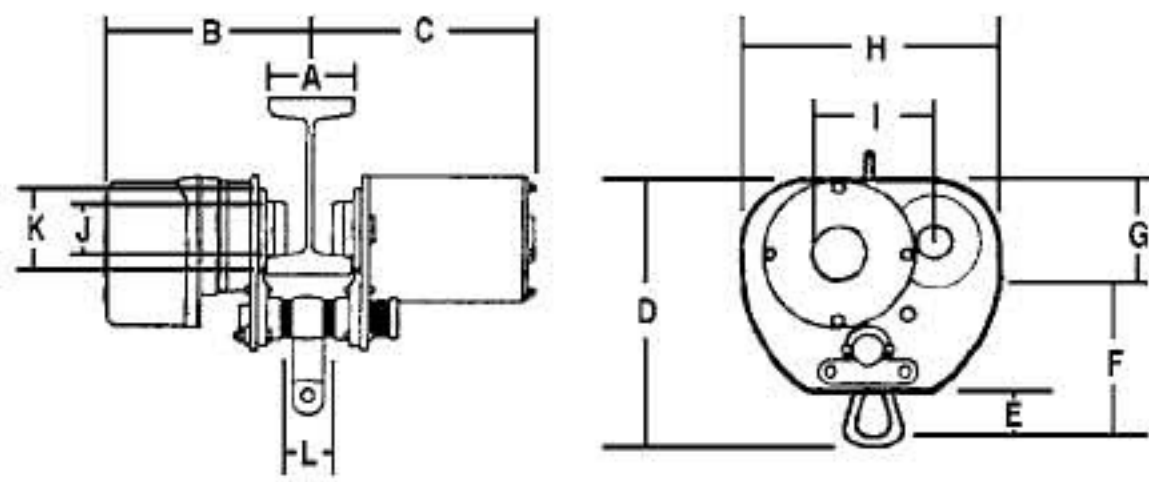
- Designed to give you single-control convenience
- All models feature 230/460V, three phase wiring (specify voltage when ordering)
- Solenoid-operated traveling brake
- Adjustable to fit various size I-beams and wide flange beams
- Must be fitted with a JET 4 station 24V pushbutton control
- Durable powder coat finish
- Lug-mount or hook pin
- Electronic trolley not supplied with 4-push button controller

NOTE

Power cable supplied by end user. Not for use in explosive environment



252610



DIMENSIONS (IN.)

MODEL	1/2 ET	1 ET	2 ET	3 ET	5 ET
A (min)	3	3	4	4	5
A (max)	5	5	6	6	7
B	9-1/8	9-1/8	9-25/32	9-15/16	10-21/32
C	9-29/32	9-29/32	10-9/16	12-25/32	13-1/2
D	9-15/32	9-15/16	11-5/8	14-1/8	16-1/2
E	1-1/2	1-25/32	2-3/8	2-17/32	3-5/32
F	5-1/8	5-1/2	6-7/16	7-1/16	9-1/8
G	3-3/4	3-3/4	4-13/32	6-3/16	6-5/16
H	9-17/32	9-17/32	11-11/32	12-7/16	13-1/4
I	4-23/32	4-23/32	5-27/32	6-5/16	6-11/16
J	2-11/16	2-11/16	3-5/16	3-7/8	4-3/32
K	3-23/32	3-11/16	4-3/4	5-15/16	6-5/16

STOCK NO.	MODEL	RATED CAP'Y (LBS)	BEAM FLANGE (W/IN)	TRAVEL SPEED (FPM)	HOOK MOUNT HEADROOM (IN)	MOTOR	DUTY CYCLE RATING	MIN RADIUS CURVE (IN)	NETWEIGHT (LBS)
252605	1/2 ET-3	1100	3-5	39-1/3	5-5/16	1/2HP, 3Ph, 230/460V	24V	43-5/16	63
252610	1 ET-3	2200	3-5	39-1/3	5-19/32	1/2HP, 3Ph, 230/460V	24V	43-5/16	81
252620	2 ET-3	4400	4-6	39-1/3	6-1/2	1/2HP, 3Ph, 230/460V	24V	59	81
252630	3 ET-3	6600	4-6	39-1/3	7	1HP, 3Ph, 230/460V	24V	59	110
252650	5 ET-3	11,000	5-7	39-1/3	9-5/16	1HP, 3Ph, 230/460V	24V	78-3/4	187